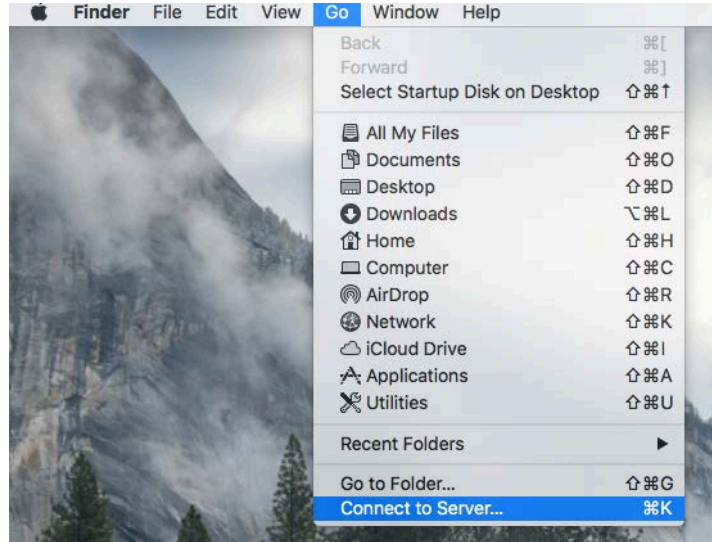


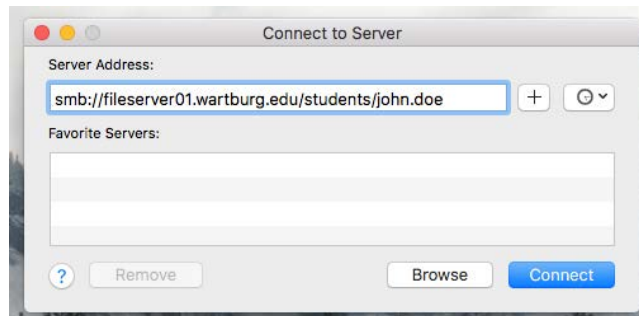
On-Campus Personal (K:) Drive Mapping OSX

1. When you are in the finder click on the “GO” menu and then click on "Connect to Server":



2. In the dialogue box that appears, type the following in the Server Address window:

smb://fileserver01.wartburg.edu/students/firstname.lastname in the server address bar



3. In the next window, be sure "Registered User" is selected
4. In the "Name" window, enter your Wartburg username: `firstname.lastname`
5. Your password is your Wartburg e-mail password



6. Click "Connect" and your Personal drive will be mapped on the desktop: